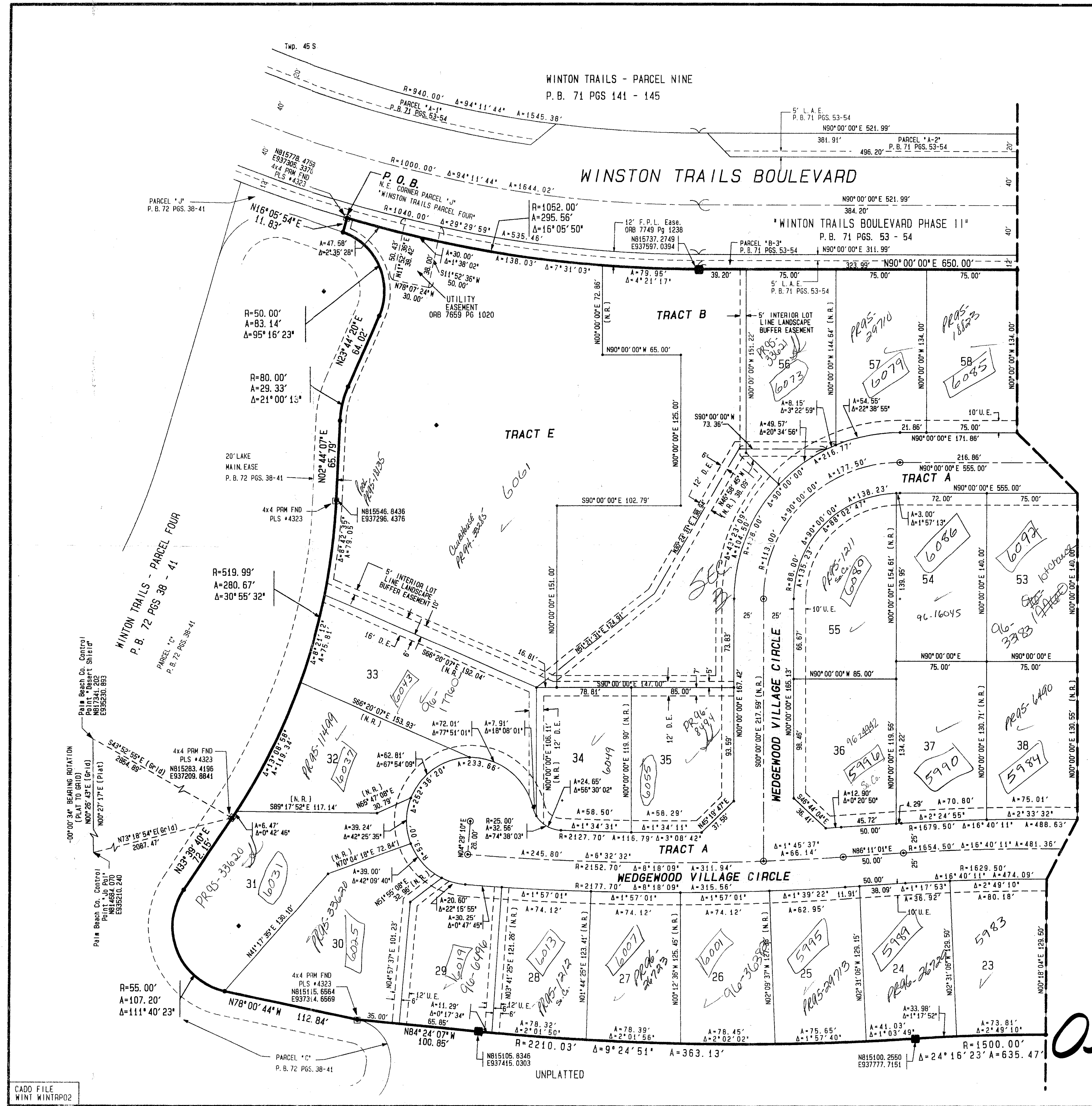
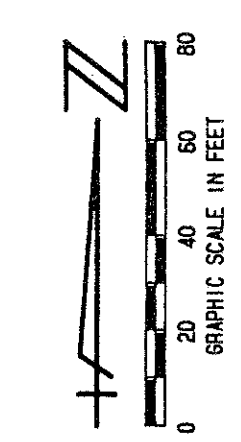


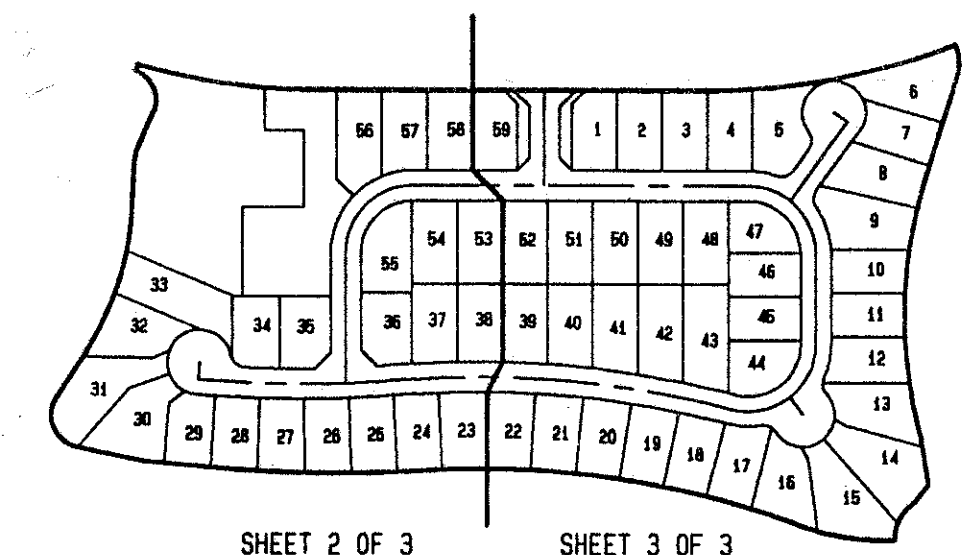
STATE OF FLORIDA
COUNTY OF PALM BEACH
THIS PLAT WAS FILED FOR
RECORD
THIS _____ DAY OF _____
AD. 1995 AND DULY RECORDED
IN PLAT BOOK _____ ON PAGES
_____ AND _____
DOROTHY H. WILKEN, CLERK
BY: _____, D. C.

CIRCUIT COURT SEAL



**WINSTON TRAILS
PARCEL FIVE**
PART OF WINSTON TRAILS P. U. D.
SITUATE IN SECTIONS 2 & 3, TOWNSHIP 45
SOUTH, RANGE 42 EAST
PALM BEACH COUNTY, FLORIDA
AUGUST, 1994 SHEET 2 OF 3

PET. 87-112C
ALOC. #0001
5/2/2/I



SHEET INDEX

MATCH LINE SEE SHEET 3 OF 3

LEGEND

- F. P. L. FLORIDA POWER & LIGHT
- U. E. UTILITY EASEMENT
- D. E. DRAINAGE EASEMENT
- R. O. W. RIGHT-OF-WAY
- P. B. PLAT BOOK
- O. R. B. OFFICIAL RECORD BOOK
- P. G. PAGE
- M. E. MAINTENANCE EASEMENT
- L. N. D. D. LAKE NORTH DRAINAGE DISTRICT
- (N. R.) NON-RADIAL LINE
- P. O. B. POINT OF BEGINNING
- P. O. C. POINT OF COMMENCEMENT
- P. U. D. PLANNED UNIT DEVELOPMENT
- Δ DELTA ANGULAR VALUE
- R RADIUS LENGTH
- A ARC LENGTH
- PERMANENT CONTROL POINT
- (P. C. P.) P. L. S. NO. 4763
- PERMANENT REFERENCE MONUMENT FOUND
- PERMANENT REFERENCE MONUMENT SET
- (P. R. M.) P. L. S. NO. 4763

ALL DISTANCES ARE GROUND.
SCALE FACTOR = 1.0000277

THIS INSTRUMENT WAS PREPARED BY MARY HANNA CLODFELTER, P. L. S., IN THE OFFICES OF MOCK, ROOS & ASSOCIATES, INC., 5720 CORPORATE WAY, WEST PALM BEACH, FLORIDA 33407.

0587-011

75/141

MOCK, ROOS & ASSOCIATES, INC.
5720 CORPORATE WAY, WEST PALM BEACH, FL 33407 (407) 693-3113

SCALE: 1" = 40'
DATE: AUGUST, 1994
P. A. NO. 9417.00
DWG. NO. 45-42-2-4

WINSTON TRAILS PARCEL FIVE
PART OF WINSTON TRAILS, P. U. D.
SECT. 2 & 3; TOWNSHIP 45 SOUTH; RANGE 42 EAST

SUBDIVISION Winston Trails Parcel 5
BOOK 75
FLOOD MAP # 170A
QUAD # 49, 34
SE 87-112
PUD NAME SEAS 2, 3, 4, 5, 4, 2

CADD FILE
WINT WINTAPO2

UNPLATTED